

CORNISE

ASSEMBLY AND INSTALLATION MANUAL

In order to assemble and install Cornise, it is needed to follow the instructions below by drilling the necessary holes on the profiles.

The required tools are shown below.



Drill screwdriver with a set of iron drills



Soldering iron



Screwdriver Phillips
Set of Allen keys

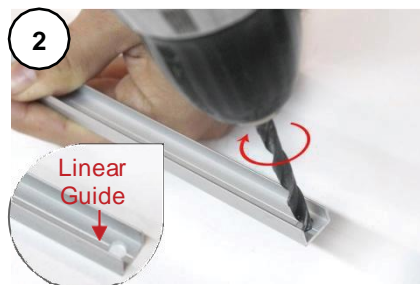
Preparation steps



In the recess of the Cornise profile, near the edge where the LED strip is installed, create an opening for the power cables to pass through. Position the hole as close to the profile's edge as possible.



Notice: The hole should only be made on the surface of the profile where the LED strip is placed and should not extend below this level.



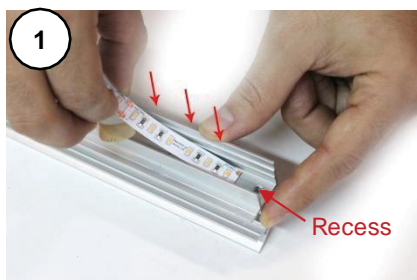
On one side, a few millimeters from the edge of the base profile, create a hole of the appropriate diameter for the power cables.

For mounting, mark and drill three holes per meter to secure it to a solid surface. The holes should be spaced 40 cm apart, and their diameter should match the fastening screws used.

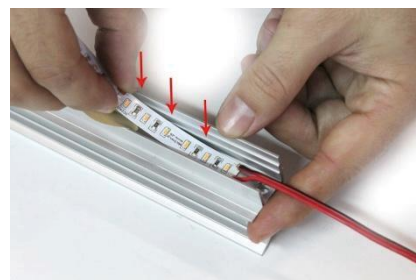


Assembly procedure

Notice: At this point and according to the installation, you can solder the power cables on the Led strip or if the cables are coming through the solid surface, you can solder them later.



Center the LED strip within the recess of the Cornise profile. Gradually remove the protective layer from the adhesive side of the strip while pressing it firmly into place.



Notice: Apply pressure along the entire length of the LED strip to ensure it adheres properly to the profile. Avoid touching the top surface of the LED.

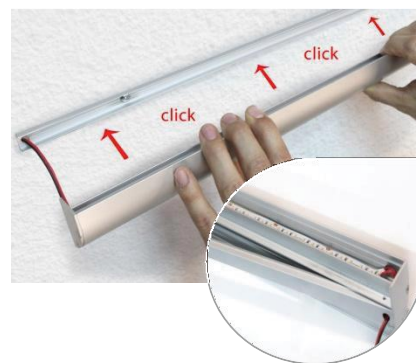


Connect the LED strip's power cables to the power supply, routing them through the feed holes on both profiles.

Fasten the two end caps onto both ends of the Cornise by securing them with the included flat-head screws. Screw them into the specially designed round-shaped points (A) on the profile.



Secure the base profile to the solid surface using the selected screws. Then click the Cornise to the base.



Clip on the plastic cover on the profile's recess, where the Led strip is placed.

